



FOR LEASE | \$16 SF FULL SERVICE

1023 EXECUTIVE PARKWAY

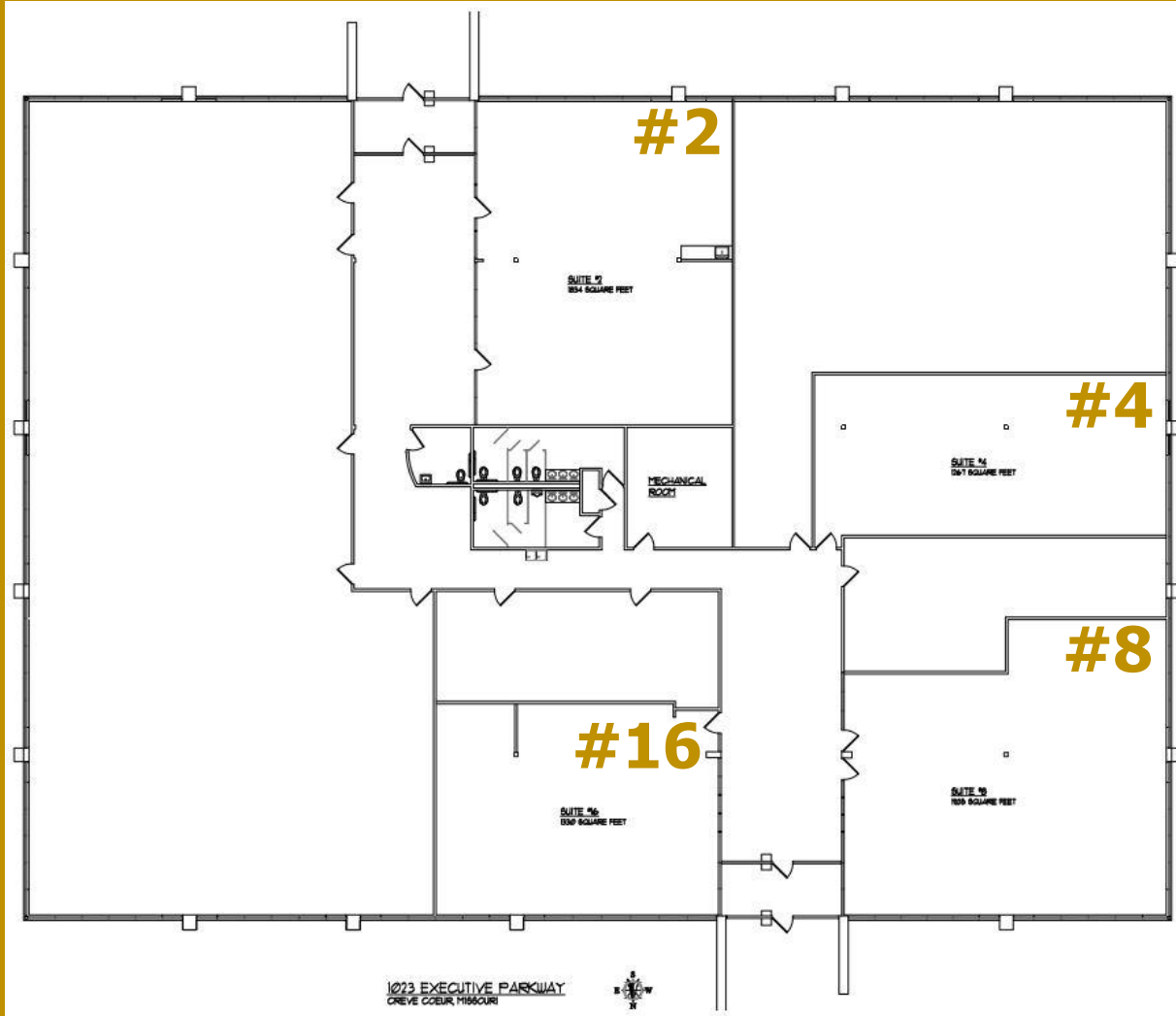
CREVE COEUR, MO 63141



- Up to 6,600 SF Available
- Brand New Office Space
- 4 Units Available (See Floor Plan)
- Conveniently Situated Halfway Between I-270 and Route 141
- Excellent Location off Olive Boulevard
- Building Under New Ownership
- Significant Investments made to Common Areas and Landscaping
- Across from Newly Built Hospital

AUGUST SCHLAFLY c: 314.705.2909
august@schlaflycorporation.com

SCHLAFLY CORPORATION



- **Suite #2: 1834 SF**
- **Suite #4: 1267 SF**
- **Suite #8: 1935 SF**
- **Suite #16: 1330 SF**



AUGUST SCHLAFLY c: 314.705.2909
august@schlaflycorporation.com

Information contained herein was obtained by sources considered reliable. We cannot be responsible, however, for errors, omissions, prior sales, withdrawal from market or change in price. Seller and Broker make no representation as to the environmental condition of the property and recommend purchaser's independent investigation.

2 North Meramec Avenue
3rd floor
Clayton, MO 63105

o: 314.725.2414
f: 314.725.0117
schlaflycorporation.com